

How To Read Your Meter

Where To Look On The Meter

- Locate the white numbers on the right side of the meter dial (black background). Turns of numbers in the black area register that hundreds of gallons of water have passed through the meter.
- Locate the black numbers on the left side of the meter dial (white background). Turns of numbers in the white area register indicates that 1000 gallons of water have passed through the meter.
- The meter dial is read like an automobile odometer, straight from left to right

Determining Your Water Usage

Use the following example to help read your meter:

- Select a day to take an initial water meter reading.
- Write down the numbers you see on the meter odometer. Example: 0073770
- After a period of time has passed (a day or week, for example), read your meter again at approximately the same time of day. Example: 0075770
- Subtract your first reading from the second. This is your water usage for that period of time. Example: 0075770-0073770=2000
- The 2000 figure indicates that 2000 gallons of water have been used during the time period between the two readings.

Needle Indicator

Indicates flow. One complete rotation of the needle is equal to ten gallons of flow.

Place Holder

Indicated by [0]. Lincoln County Public Works reads in tens of gallons of usage

Meter Register

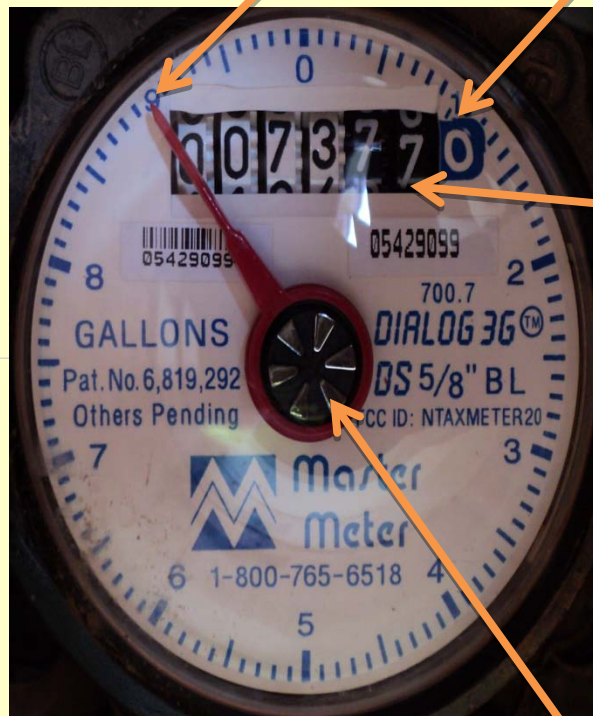
Every Turn of a number in the first black register measures 10 gallons; the second, 100 gallons.

Every turn of a number in the white register measures 1000 gallons.

The meter shown is registering 73,770 gallons of usage since its installation.

Leak Indicator

Measures small amount of flow. If no water is being used inside or outside, this indicator should not be moving. If it is rotating you may have a leak.



Lincoln County Public Works
115 West Main Street
Lincolnton, NC 28092
(704) 736-8497